

IMPORTANT INFORMATION FOR MEMBER CENTRES, AGENTS AND STUDENTS

NEW UK STUDENT VISITOR VISA

On 1 September 2007 a new Student Visitor Visa for the UK will be introduced. This is an important and positive development but member centres, agents and students need to be aware of the consequences.

For students who need a visa to enter the UK (visa nationals), the new Student Visitor visa will:

- cost £63, the same as a visitor visa
- be issued normally for 6 months, even if students intend to take shorter courses
- not allow students to work
- not allow students to extend their stay in the UK beyond 6 months
- be issued only if students are enrolled at centres on the DfES Register
- need students to show they meet the visitor rules to enter the UK.

For students intending to stay less than 6 months who do not need prior entry clearance to enter the UK (non-visa nationals), they should ensure that they ask for the Student Visitor category at the airport or port where they enter the UK.

ALL students that are going to do a work placement as part of their course, or wish to work or possibly to extend their stay, will need to apply to the nearest British Diplomatic post abroad for a visa to enter the UK as a STUDENT, not as a Student Visitor. The full student visa costs £99.

It will no longer be permitted for people who enter the UK after 1 September on a Visitor visa to study while they are in the UK. (We are not expecting heavy enforcement action on this in the short term, but it is likely that this will be tightened up progressively in future.)

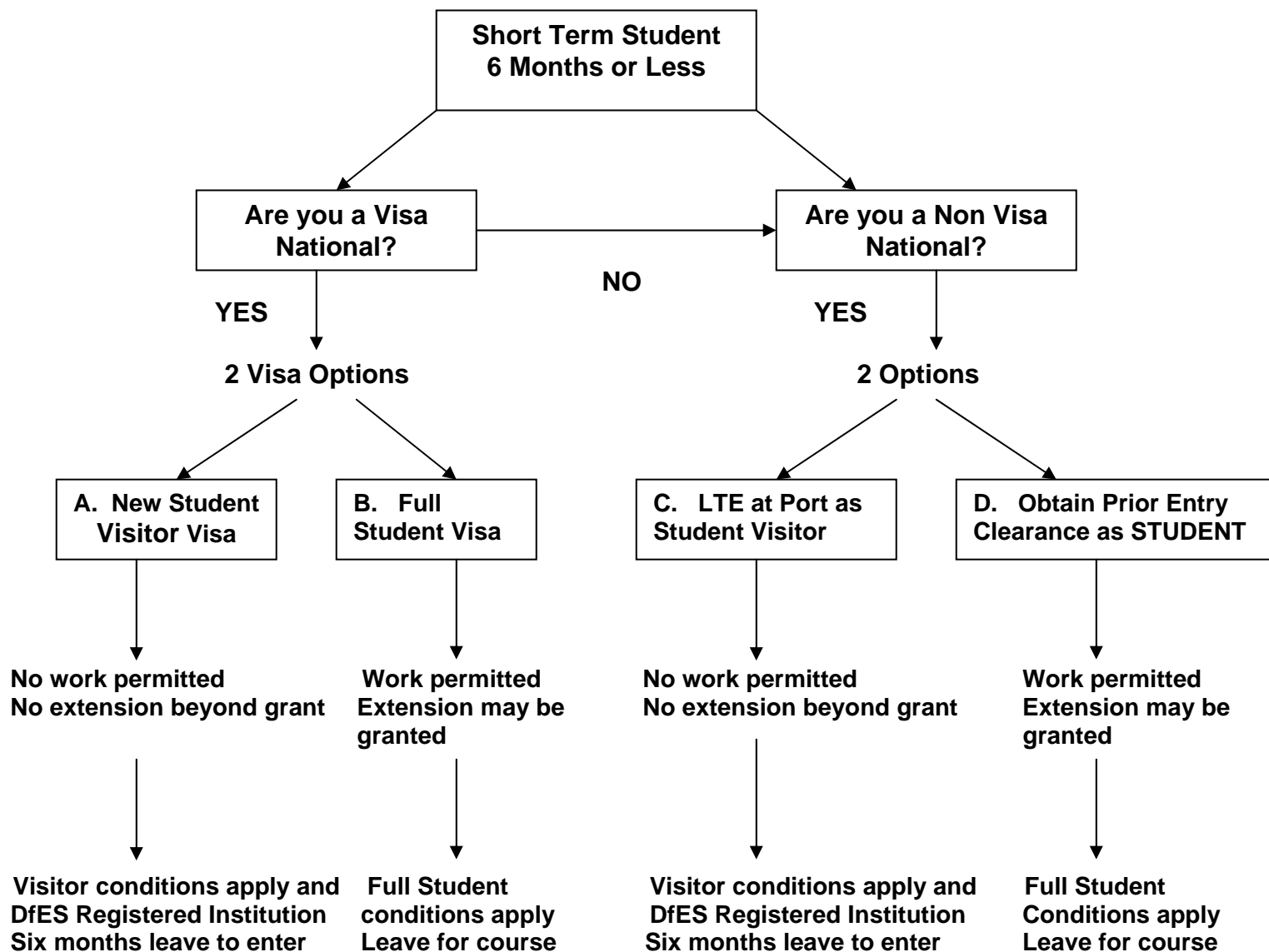
Link for the list of visa nationals:

<http://www.ind.homeoffice.gov.uk/lawandpolicy/immigrationrules/appendix1>

The following flowchart gives the options for students who wish to come to the UK for a course of up to 6 months.

Produced by English UK www.englishuk.com (in liaison with the Border & Immigration Agency www.ind.homeoffice.gov.uk and UKvisas www.ukvisas.gov.uk)

04/07/2007



Where do you fit?

If:

- you intend to take employment (i.e. 20hrs per week part-time/full time in vacation periods or will be undertaking a work placement (paid or unpaid) as part of a course of study);

Or

- You wish to seek an extension of stay beyond your initial grant of leave,

YOU MUST OBTAIN A FULL STUDENT ENTRY CLEARANCE at the nearest British Embassy or Consulate. If not, as a non-visa national you may still qualify for leave to enter as a student visitor without these entitlements or as a visa national you need only apply for a student visitor visa.